

ART CLAY WORLD EU CONFERENCE 2008

Classes and demonstrations

This year we are incredibly lucky, with an amazing spread of topics, split between hands-on classes and shorter demonstrations, with fabulous metal clay artists. However, I'm afraid you won't be able to do all classes, or attend all demos. We could have fewer tutors and fewer topics, which would allow everyone to take every class, but with the selection of tutors we've managed to get this year, we decided to go with the first-come-first-served option. That means lots of tutors and lots of topics, so lots of choice. But, to ensure you get to attend your first choice, you have to sign up quickly!

Here are all the presentations and demonstrations lined up alphabetically.

Achieving bright enamel colours on metal clay - Glyn Mitchell - 3 hour class



Color is all important in Enamelling. We have all applied enamel to Metal Clay and have been very excited to see the results. The disappointment we have experienced when your piece comes out of the kiln puts many people off. I will provide you with the knowledge of how to achieve good color time and time again.

A piece of metal clay will be provided to be enamelled. There will be an extra charge of £10 to be paid directly to Glyn on the day, this will cover enamelling materials.

Art Clay Silver and Glass Fusion - Amanda Mires - 3 hour class



Glass is such an exciting medium because it offers so many possibilities and never fails to delight and surprise. Just like Art Clay Silver, glass can be as simple or as sophisticated as you wish - with equally stunning results - so what better than to explore the interaction between the two!?

In this class I'll discuss the different types of glass available and explore different techniques of cabochon composition and manufacture, with particular emphasis on firing programmes. We'll then use a pre-fired cabochon to create a unique piece of silver and glass fusion.

Ceramics and silver clay - Carol Douglas - 3 hour class



Have you ever wanted to work with ceramics - maybe even combine it with metal clay? This class is for you. Carol is going to demo different types of ceramic clay, how to use, glaze, and fire them. There will be a question and answer session about ceramic clay, kiln management, health and safety of glazes.

You'll get a chance to experience the feel of different ceramic clays, and will make a porcelain blank for use with metal clay. Carol will show you how to make a little box and how to use overlay paste. There is a £5 extra charge to be paid directly to the tutor to cover for material used.

Drawing pictures with the ACS syringe - Sue Heaser - 1 hour demo



In this presentation I'll show the fine filigree techniques that I've been working on to perfect the art of drawing a controlled line with a syringe. I've developed a technique of using a very fine syringe tip and literally drawing landscapes with the piped silver.

The results can be enamelled, backed with polymer clay to give enchanting Art Nouveau effects and embellished with resin. The technique can also be used to make openwork designs in filigree. This demonstration was presented at the Metal Clay World Conference in Las Vegas August 2007 but I have now pushed some of the techniques even further with new ideas!

Elevate your metal clay creations; make your own sterling silver findings - Lisa Cain - 1 hour



There comes a time in every metal clay artist's career when adding prefabricated findings to your work no longer satisfies your artistic intent. This is where traditional silverwork skills can come in handy.

This presentation will show you how to make your own sterling silver earring hooks, a secure clasp and basic chain making techniques.

Time allowing; all participants will be able to make a pair of unique earring hooks to take away. Supplier notes and outline instructions are included.

Glass Powders and Textile Effects - Erna Piechna - 1 hour demo



Recently my work has been influenced by needlework projects I made in school, using coloured twine and linen. I like fabrics and textiles, their physical properties, and the multiple meanings and symbolism they embody. In this demo show you how to incorporate these qualities into your jewellery. I'll work with glass powders - showing a new way to incorporate glass into your metal clay work.

I'll demonstrate: creating fine wafer like images with glass powders, exploring reactive qualities between different glass colours, and reactive qualities between glass powders and Art Clay, firing glass wafers into Art Clay, and patch-work and collage techniques.

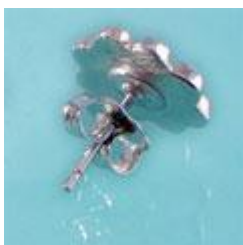
Golden touch, Keum-Boo for metal clay - Petra Wennberg - 1 hour demo



Keum Boo is a traditional Korean technique for fusing gold to metal, using heat and pressure, giving you 24ct gold accents - solidly fused to the silver. Keum-Boo (sometimes spelled Kum Bu) lends itself beautifully to metal clay, and can be left simply brushed, highly polished, patinated with liver of sulphur - giving you many different finishing options and looks.

I'll go through different techniques and heating options available. You should leave with a good basic understanding of the technique, and should feel confident to go home and have a play yourself!

Hot fusion - Jo Dix - 1 hour demo with some hands-on



Soldering findings to Art Clay Silver can be tricky, especially for those without a more traditional jewellery-making background.

Jo will share some tricks of the trade, demonstrate a few simple techniques and then guide you through the soldering process.

Remember to bring your own fired pieces and relevant findings to be soldered to the class as this is a final steps workshop.

Jumpstart your creativity - Robert Dancik - Keynote presentation on Sunday afternoon



You finally have some time to work, but you sit and stare at your silver clay and think, "Why can't I just get myself started?" Call it what you like, but you have the "blank canvas syndrome". Everyone faces it but there are ways to counteract this syndrome and to jump-start anyone on the way to making highly creative, personally relevant, expressive artwork.

Techniques and ideas we will explore include: developing an emotional alphabet, artistic decision making, finding what you really want to say in your artwork, working within the "material/process/procedure" matrix, working with intent, and marrying making with expression.

Liver of Sulphur magic - Katie Baum - 1 hour demo



During this demonstration, attendees will learn tips, tricks, and techniques to help them achieve the boldest colours with Liver of Sulphur patina. Techniques will include how to achieve certain colours, how to achieve brighter colours, how to retain the patina colour longest, and tricks for mixing Liver of Sulphur to get just the results you want for your piece.

If you want to, you can bring your own fired metal clay pieces to patina during the workshop.

Making fingerprint cufflinks - Larissa Johnson - 3 hour class



Put your finger on it! During this session you will be taught how to capture a perfect detailed fingerprint and also how to transfer it onto the silver clay.

You will then be able to design and produce your very own pair of cufflinks in the class, and learn how to finish them to a professional standard.

We will also demonstrate how to solder on sterling silver cufflink backs using Easy Silver Solder Paste. There will be an extra charge of £10 to be paid to the tutor on the day to cover for extra material like sterling silver cufflinks. You can also bring your own.

Metal Clay Beads - Sue Heaser - 3 hour class



I have developed some exciting new ways to make beautiful beads without using cork clay or sacrificial core materials. These techniques are quicker and simpler than the established ones and the results are high quality and sophisticated beads. The techniques can also be used for gas hob and blow torch firing.

During the class we will make a mixture of decorated hollow core lentil and tube beads and I will demonstrate hollow core moulded beads. The results can be used to make a treasure bead bracelet which can be finished after the class if time is short. There is an extra charge of £2 to be paid directly to the tutor on the day, to cover for material provided.

Mineral stone and silver foil ring - Toshihide Ueeda - 3 hour class



Japanese artist Toshihide Ueeda developed the quick firing technique for metal clay.

Here you'll learn how to create a ring with almost no shrinkage at all, using mainly a syringe.

You'll also set a mineral stone, and learn about the quick firing technique.

This is a unique chance to take a class and learn directly from this Japanese master artist.

Mould an antique look pendant - Toshihide Ueeda - 3 hour class



Japanese artist Toshihide Ueeda developed the quick firing technique for metal clay. Here you'll learn how to create a pendant using moulds and syringe work, followed by the quick firing technique.

This is a unique chance to take a class and learn directly from this Japanese master artist.

Nature capture with Art Clay Silver - Gordon Uyehara - 3 hour hands-on class



Let nature be your guide in creating unique wearable art. In this brisk class we'll use two-part molding mix to capture dimensional nature shapes and transform them into pure silver!

Have fun combining them with stenciled foundations and decorative components. Simple, fast, and beautiful!

Pre-requisite: Some experience with metal clay.

Photo polymer plates - Katie Baum - 1 hour demo



During this demonstration, attendees will learn how to use photopolymer plate (also called photopolymer sheet) to create their own stamps and texture plates. Photopolymer plate makes flawless, intricate, reusable designs that work fabulously with metal clay, polymer clay, scrap-booking, or other crafts.

Attendees will gain the knowledge to create their own textures and stamps in the comfort of their own homes, from selecting and printing designs appropriately, to preparing images, to setting the photopolymer designs and caring for finished stamps to keep them in pristine condition for years to come.

Rings, rings, rings! - Jo Dix - 3 hour class



Rings are considered to be one of the most challenging items to make in Art Clay Silver, you need at least 3 pairs of hands to get the job done!

Jo will demonstrate 2 rings in this workshop and guide you from concept to finished piece (wherever possible).

This is not a set ring project, but a practical workshop where Jo will help you develop the designs and ideas that you bring to the class.

Tear away for metal clay - Julia Rai - 1 hour demo



The tear away technique is a polymer clay technique, which has been further developed by Celie Fago. It creates ideal textures for metal clay which you intend to Keum Bo. The relief of the textures is low and gentle which makes it ideal for Keum Bo.

This is also a very easy way of creating your own unique textures. Tear away is a process for transferring flat b&w images onto paper in a raised form. It's achieved by bonding polymer clay to paper via the toner used to print the images through a combination of friction and heat. You start off with a flat piece of printed paper and end up with a paper strip that has a durable textured surface and can be used over and over.

The Quick Firing Technique - Toshihide Ueeda - 45 minute demo on Sunday afternoon



Japanese enamelling and metal clay artist Toshihide Ueeda has developed a fascinating technique for firing metal clay, where it is possible to fire a piece in as little as one minute, using just a torch.

In this demonstration, you'll be shown how to make a ring using just a syringe, some paper, a mandrel, and a torch.

From wet clay to finished wearable piece in a matter of minutes!

Turn your hobby into a business - Glyn Mitchell - 1 hour talk



In this presentation Glyn will provide inspiration and ideas on how to turn your metal clay hobby into a business.

What could be better than working with what you love?